



[www.rskfarms.ca](http://www.rskfarms.ca)

Rae & Stephanie Kopechuk  
Farm # 204-763-4459  
Fax # 204-763-4008  
Rae Cell # 204-761-7895  
Stephanie Cell # 204-761-5228

Andrew & Tiara Kopechuk  
Andrew Cell # 204-573-9529

Stephen & Lindsay Kopechuk  
Sarah Kopechuk

Site 520, Box 7  
Brandon, MB - R7A 5Y5

[www.rskfarms.ca](http://www.rskfarms.ca)  
[rskfarms@hotmail.com](mailto:rskfarms@hotmail.com)



# RSK 2N Ms Princess ET 24W (DLF,IEF,HYF)



RSK 2N Miss Princess 24W is a female that you can't miss. Sired by the great Northeastern and by the 1195N female, 24W is a powerhouse young female worth taking a look at. 24W is a high volumed, naturally thick muscled female with awesome correctness and a sweet front end. 24W's full sister was a Canadian National Senior Heifer Calf Champion in 2006 and sold for \$11,500.00 for 1/2 interest. RSK 24W was the 2010 Canadian All-star Reserve Champion Yearling and a Silver Medal Dam recipient. Contact us for progeny.

### Highlights:

- 2011 MLE MOE Reserve Champion Female
- 2011 MLE MOE Champion 2 Year Old Female
- 2011 MLE MOE Reserve Champion Heifer Calf (calf on cow)
- 2011 MLE Premier Exhibitor (with 5 head)
- 2011 Reserve Champion Female - MB MOE Show Filed Day
- 2010 MLE MOE Show Champion Female
- 2009 MLE MOE Show Reserve Champion Heifer Calf

Remital Online 122L

Wilgor 55K Northeastern OL 2N

Wilgor 174K Keyline 55K

Remital Icon 24K

MHPH MS 24K Princess 1195N

MHPH MS 121J Princess 314L

DOB: Feb 25, 2009 Reg# C02928257

BW: 90lbs - WW: 813lbs - YW: 1262lbs

EPDS BW WW YW MM TM

4.8 56.1 94.1 22.4 50.5



Sire of RSK 24W

# RSK 4L Ms Princess 1Y



### Highlights:

- 2011 MLE MOE Reserve Champion Heifer Calf

Progeny For Sale



Dam of RSK 24W

RSK 24W's First calf, sired by Harvie Ladies Man 4L.



# RSK 4L Sunshine 25S (DLF,IEF,HYF)



RSK Sunshine is one our of favourite Ladies Mans daughters. She is a moderate female that is very feminine and fancy in her make up. A great numbered female with high maternal, Sunshine raises her progeny the same. RSK Sunshine is a member of our donor team and we are very excited to have more progeny numbers from her.

### Highlights:

- 2007 Manitoba Summer MOE Show Reserve Champion Female
- 2007 Royal Manitoba Winter Fair Reserve Champion Hereford

Harvie Hills 68H  
 Harvie Ladies Man 4L  
 Harvie Miss Julie 9J  
 RU Duster 60D  
 RSK 60D Penelope 10P  
 RSK 707B Hannah 20H

DOB: Feb 28, 2009 Reg# C02885653  
 BW: 90lbs - WW: 813lbs - YW: 1262lbs  
 EPDS BW WW YW MM TM  
 6.2 52.5 87.1 19.0 45.3

### RSK 25S Progeny



ARSK 17W  
 2009 MLE Champion  
 Heifer Calf



ARSK 8Y

Embryo's for Sale by Tailor Made 7W (CDN)  
 Flushing Spring of 2013

# RSK 4L Sage 23S (DLF,IEF,HYF)



A great Ladies man daughter that is made very compact and very stout. Her last RSK Down Under calf was an Agribition class winner. We are so pleased with the job she is doing that RSK 4L Sage 23S will become a part of our donor program.

Harvie Hills 68H  
 Harvie Ladies Man 4L  
 Harvie Miss Julie 9J  
 RSK 707B Harrison 24H  
 RSK 24H Paprika 25P  
 RSK Ginger 20G

DOB: Feb 26, 2009 Reg# C02890585  
 BW: 75lbs  
 EPDS BW WW YW MM TM  
 3.2 41.6 69.9 19.1 39.9

### RSK 23S Progeny



RSK 64Y - 2011 CWA Class Winner

Embryo's for Sale  
 Fall of 2012

# RSK 24H Nina 32N (DLF,IEF,HYF)



RSK Nina is another great Harrison daughter. Like fine wine, getting better with age. As most Harrison daughters she adds a little more performance, but raises great calves. RSK Nina is a 3/4 sibling to RSK 24H Magnolia 45M and a member of our donor team and we are very excited to have more progeny numbers from her. Watch for many great opportunities to come.

Klondike 28U 707B  
RSK 707B Harrison 24H  
Happy Hollow Shannon 03C  
JSF 37 271 Devo 23C  
RSK 33C Lilith 11L  
Eagle 12G Jasmine 3J

DOB: Mar 06, 2003 Reg# C02828222  
BW: 92lbs - WW: 550lbs - YW: 1025lbs  
EPDS BW WW YW MM TM  
5.6 49.4 90.5 15.8 40.5

Sire: RSK 707B Harrison 24H



Embryo's for Sale by Tailor Made 7W (CDN)  
Flushing Spring of 2013

# RSK 24H Magnolia 45M (DLF,IEF,HYF)



Pictured at 10 Years of Age

RSK Magnolia is one of the few remaining RSK Harrison daughters remaining here at RSK. Truly standing the test of time Harrison daughter seem to get better with age. Magnolia will add more performance into her progeny, but at the same time adding pigment, do-ability and longevity, beyond doubt raising calves that will make great cows. RSK Magnolia is a member of our donor team and we are very excited to have more progeny numbers from her.

Klondike 28U 707B  
RSK 707B Harrison 24H  
Happy Hollow Shannon 03C  
Eagle 7C General 12G  
Eagle 12G Jasmine 3J  
Eagle 3E Gabrielle 25G

DOB: Mar 12, 2002 Reg# C02808553  
BW: 90lbs - WW: 500lbs - YW: 925lbs  
EPDS BW WW YW MM TM  
5.3 46.0 77.0 13.6 36.6

RSK 45M Progeny



RSK 6X  
2010 MLE Reserve  
Champion Female



RSK 14Y

Flushing Spring of 2013



# RSK 154U Miss Tamara 8X (DLF,IEF,HYF)



Harvie Raftsman 16R  
Harvie OVHF Walk Hard 154U  
BBSF 100L Unique ET 131R  
Kairuru Aberdeen 03 0047  
RSK Miss Tamara 23U  
Haroldsons 37H Tamara 73L

DOB: Feb 10, 2009 Reg# C02941454  
BW: 88lbs - WW: 732lbs - YW: 1030lbs.  
EPDS BW WW YW MM TM  
5.2 58.7 98.1 16.6 46.0



RSK 8X as Heifer Calf



Sire of RSK 8X  
Flushing Spring of 2013

RSK 8X was loved as a heifer calf by everyone who looked at her, and adored as a bred. This female has been a true powerhouse right from the beginning. Many breeders saw the tremendous value that this female will add to any herd at the 2011 CWA. RSK 8X is sired by Walk Hard and out of an Aberdeen female that is in the RSK donor pen. RSK 8X has tremendous volume and capacity, great shape with a deep hip and flank. She also shows great eye appeal and is short marked with pigment. RSK Miss Tamara 8X is a dominant young female that will for sure make donor ranks in the future.

Owned With: Clay Enterprises, Wapella, SK.

#### Highlights:

- 2011 MLE MOE Reserve Champion Yearling
- 2011 MB MOE Show Field Day Class Winner
- 2011 Reserve Champion Senior Yearling - MB MOE Show Harding, MB
- 2011 Royal Manitoba Winter Fair – Lady Classic Finalist
- 2010 2nd in class at CWA
- 2010 MLE Little Lady Classic Champion Hereford

## RSK Farms Info

RSK Farms is a family-run Polled Hereford and commercial operation, which started in 1984.

Owned by Rae and Stephanie Kopeechuk and family, the farm is located just east of Brandon, Manitoba, along the Trans-Canada Highway.

Our breeding operation consists of about 50 registered Hereford females and 45 commercial Hereford-Angus females. The rest of the farm consists of 3.5 sections of both owned and rented crop land, hay fields and pastureland.

Feed efficiency and docility are two very important traits which we look for in our Hereford cattle. Good structure, muscling, carcass and pigment are also sought-after traits. The cattle must be functional and marketable and at the end of the day, and they need to flat out work.

The purebred Herefords start calving in January and calves are weaned by the end of September. The cows are wintered on hay only. As well as walking numerous bulls, the farm uses AI and ET technology to acquire desirable traits and improve genetic response through predictability and repeatability through number of progeny.

RSK is enrolled in the THE (Total Herd Evaluation) program of the Canadian Hereford Association because the collection of data helps us evaluate our own cattle against other breeding programs, as well as within our own herd. We also collect carcass data on all registered animals through CUP. It's a great tool to help you improve and develop your herd, under the hide, where pounds are made. That's where our bull buyers make their money.



2009 MLE

# Harvie Traveler 69T (DLF,IEF,HYF)



Leelands Transition Q24  
 Kairuru Aberdeen 03 0047  
 Kairuru Plum T44  
 Leveldale Kodiak 23C ET 19K  
 Harvie Pearl 129P  
 Easton 26Y Iron Lady 43A

DOB: Feb 21, 2007 Reg # C02895589  
 BW: 100lbs - WW: 1001lbs - YW: 1300lbs  
 EPDS BW WW YW MM TM  
 6.7 72.8 111.7 32.7 69.1

There's not much that I need to say that you don't already know about Traveler 69T. From the first time that we saw him, we knew the impact that he would have on our herd. We have had much success with him and have

daughters in production that are doing amazing job. All you need to do is just look at his stats. Top maternal sire in the breed, trait leader in 4 EPD's, progeny in 26 herds. The list goes on and on. He has done a great job and we plan to use him more in our flush program.



RSK 11W  
 2009 MLE Reserve  
 Champion Bull



RSK 17W  
 2009 MLE Champion  
 Heifer Calf



2009 MLS Champion  
 Get of Sire



RSK 6X  
 2010 MLE Res  
 Champion Female

# Harvie Tailor Made 7W (DLF,IEF,HYF)



Kairuru Aberdeen 03 00  
 Harvie Traveler 69T  
 Harvie Pearl 129P  
 Harvie Deynote 61D  
 Harvie Miss Firefly 51F  
 Harvie Miss Nylon 1Y

DOB: Jan 28, 2009 Reg#C02927239  
 BW: 94lbs - WW: 1035lbs - YW: 1350lbs.  
 EPDS BW WW YW MM TM  
 6.3 57.0 95.5 23.9 52.4

Tailor Made is a powerhouse. He just has that bull look to him. His sire Traveler was the high selling bull calf in Canada 2 years ago, and two time Canadian Reserve Champion Bull. His

dam 51F is one of the leading females in the industry. Tailor Made is stout, deep and nice fronted. He is dark red and full of pigment. We have used Tailor Made now for 3 seasons and are quite happy with the calves he has sired. He has also been used in our flush program. Look for many more calves to come in the future.



RSK 8Y



RSK 14Y



RSK 10Y



RSK 12Y



# Haroldson's Rhino ET 48Y (DLF,IEF,HYF)

SHF Rib Eye M326 R117  
SHF Tahoe R117 T100  
SHF Lady 512 L73  
Remitall Hollywood 37H  
Haroldson's 37H Mira ET 62K  
Haroldson's CU Destiny 2Z 19G

DOB: Mar 26, 2011 Reg# C02960238  
BW: 94lbs - WW: 1001lbs - YW: 1300lbs  
EPDS BW WW YW MM TM  
4.5 59.4 102.6 13.4 43.1



Dam of Rhino



Sire of Rhino

If you are in the beef business then you will really appreciate Rhino. Recently described in Denver as a bull with tons of Power, Dimension, Top, and Performance, the future of this exciting new prospect just keeps getting brighter. This electrifying cross of Tahoe and Mira is what I believe to be a no miss. We at RSK cannot wait to have calves on the ground by Rhino and believe that they will have a major impact in the future.

## 2011 Highlights

CWA Junior Champion Bull Calf

CWA Class Winner

## 2012 Highlights

2nd in class at NWSS Denver

# RSK Farms Info con't

RSK Farms' cattle are consigned to several Manitoba sales and are also sold by private treaty. The operation has also taken part in many cattle shows in Manitoba and at Saskatchewan's Canadian Western Agribition, for several years.

Progeny and genetics from their breeding program have been marketed to Ireland, New Zealand, Australia, Russia, Kazakhstan, the USA and Canada.

Our herd sire RSK 707B Harrison 24H had a great deal of influence within the herd, breeding strong replacement females. More recently, we have used Traveler 69T, who has also sired strong females which have been added to the herd as replacements. Bulls sired by Traveler 69T, Tailor Made 7W and RSK Stinger 17S have also been popular and have been sold privately or by public auction. The most recent bulls introduced to the herd is RSK 030047 Down Under 6U, who is showing real promise, siring class winners and high sellers. Two new junior sires will also be used, RSK 204P Player ET 37Y and Rhino 48Y.

All three of Rae and Stephanie's children are active on the operation. Andrew, is employed with Agriculture and Agri-Food Canada as a research technician and President of the Manitoba Hereford Association, and his wife Tiara, the landscape designer for Alternative Landscaping, help with the management and breeding of the RSK beef herd. Stephen, who is employed with Miller Farm Equipment as a heavy duty mechanic, takes an active part in the farm's crop and forage production. His fiancée Lindsay, is currently in the insurance business. Sarah Kopechuk is pursuing a nursing career and still helps out on the farm as time permits.



# RSK Down Under 6U (DLF,IEF,HYF)



Leelands Transition Q24  
 Kairuru Aberdeen 03 0047  
 Kairuru Plum T44  
 FCC 60G Maddux 4I  
 TRI-AC Jewel's Maddie 4L 4R  
 GRH 1H Jewel 10L

DOB: Feb 08, 2008 Reg#C02923423  
 BW: 87lbs - YW: 1055lbs  
 EPDS BW WW YW MM TM  
 5.7 49.4 88.1 9.8 34.5

RSK Down Under has been doing a fantastic job at RSK. He is a tremendous Aberdeen son that is dark red and goggle eyed. Long bodied combined with the amazing Aberdeen depth and thickness. He has sired Agribition and MLE class

winners for us, topped the Good as Gold Sale and has topped our private treaty bull sales. We are using him in our flush program and he is walking the pastures for the third year.



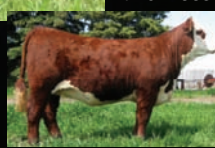
RSK 2Y  
Private Treaty Bull



RSK 53Y  
Private Treaty Bull



RSK 5Y  
2011 Agribition Class  
Winner & GAG High  
Seller



RSK 64Y  
2011 Agribition Class  
Winner

Semen Packages Available  
 Spring 2013 - No Cert  
 50 - \$2000 25 - \$1250

# RSK 204P Player ET 37Y (DLF,IEF,HYF)



Remitall Highway ET 157H  
 Remitall Lagrd Pounder ET 204P  
 Remitall Catalina 24H  
 Remitall embracer 8E  
 Harvie June 28J  
 Harvie Miss Nylon 1Y

DOB: Mar 02, 2011 Reg#02957025  
 BW: 96lbs - WW: 752lbs - YW: 1135lbs  
 EPDS BW WW YW MM TM  
 4.0 40.0 64.6 14.6 34.6



Dam of Player



Sire of Player

Sired by Pounder and going back to Embracer, this is a calf that we really like. He displays great relation to balance and dimension, as well as being very square hipped. He is in the top 1% for Stayability. Watch for this up and coming new herdsire to play a big role at RSK Farms, siring moderate framed, thick butted offspring.